

The Duke Law JD/LLM Program presents

2009 Summer Speakers

June 1
Burdman



Professor Jonathan Wiener

Jonathan Wiener is William R. and Thomas L. Perkins Professor of Law, Professor of Environmental Policy at the Nicholas School of the Environment, and Professor of Public Policy Studies at the Sanford School of Public Policy. He also directs Duke Law's JD-LLM Program in International and Comparative Law.

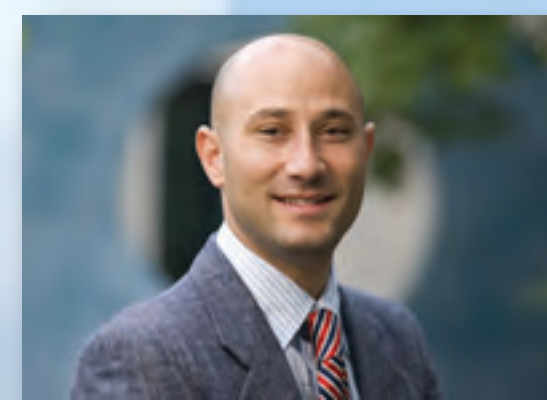
June 10



Professor Scott Silliman

Scott Silliman is a Professor of the Practice of Law and the Executive Director of the Center on Law, Ethics and National Security. Professor Silliman's teaching and research interests focus on national security law, international humanitarian law, military law, and the law of armed conflict.

June 17



Professor Noah Weisbord

Noah Weisbord is a Visiting Assistant Professor of Law who holds undergraduate degrees in science and social work and law degrees in common and civil law. He is currently completing his doctoral dissertation at Harvard Law School on the crime of aggression in international criminal law.

June 23



Professor Deborah DeMott

Deborah DeMott is the David F. Cavers Professor of Law. She served as the Reporter for the American Law Institute's Restatement (Third) of Agency, and is the author of a treatise, Shareholder Derivative Actions, and a casebook, Fiduciary Obligation, Agency and Partnership. Her other writing concerns corporate law, takeovers and acquisitions, and fiduciary obligation.

June 24



Professor Jim Salzman

Jim Salzman is the Samuel Fox Mordecai Professor of Law and Nicholas Institute Professor of Environmental Policy. He is active in the fields of practice and policy, serving since 1996 as a principal liaison for the Trade and Environment Policy Advisory Committee, a government-appointed body providing counsel to the EPA.

July 1



Professor Mitu Gulati

Mitu Gulati is a Professor of Law who does research in the areas of Securities Regulation, International Debt Transactions, Corporate Law, Employment Discrimination, and Judicial Behavior. An overarching theme of his research is the attempt to combine empirical and theoretical methodologies from various disciplines in seeking to answer legal questions.

July 8



Professor Larry Helfer

Larry Helfer is the Harry R. Chadwick, Sr. Professor of Law and the co-director of Duke's Center for International and Comparative Law. He has authored more than fifty publications and lectured widely on the interdisciplinary analysis of international law and institutions, international human rights, international litigation and dispute settlement, and international intellectual property law.

July 13



Professor Arti Rai

Arti Rai is the Elvin R. Latty Professor of Law and an expert in patent law, law and the biopharmaceutical industry, and health care regulation. Her current research, funded by the NIH, focuses on intellectual property issues raised by collaborative R&D in areas ranging from synthetic biology to drug development.

July 22



Professor Steven Schwarcz

Steven Schwarcz is the Stanley A. Star Professor of Law & Business. His main areas of scholarship are commercial law, bankruptcy, and international finance and capital markets, where he brings the unique perspective of having been a leading practitioner as well as a scholar.

All events are at 12:00 noon in Room 4049
Lunch will be provided

DUKE LAW